

**Figure 1. CTVW-I-DO1, Proposed CO<sub>2</sub> Injection Schematic**

Cut casing 5' below GL. Stamp and weld cap.  
Backfill and reclaim surface location.

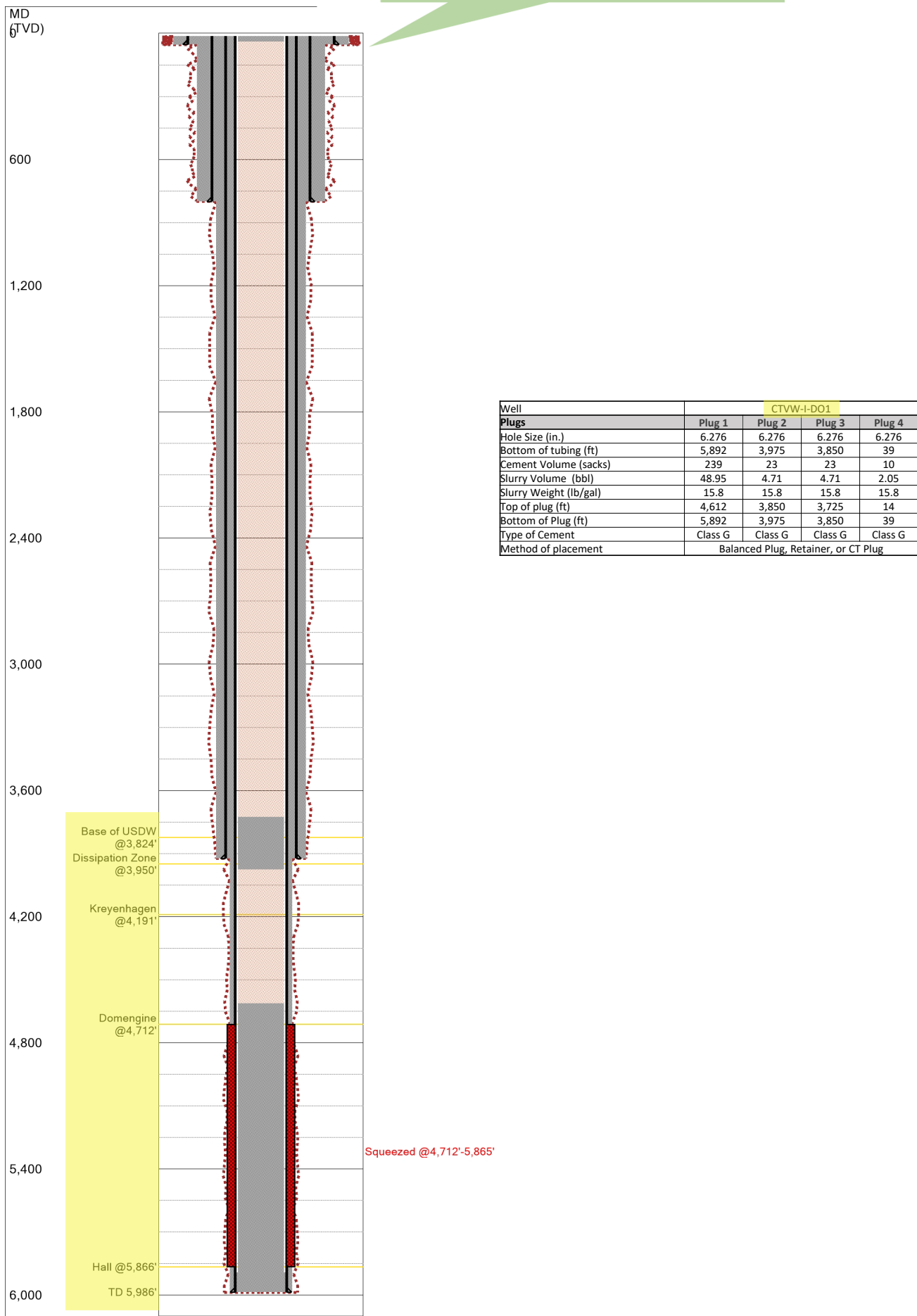
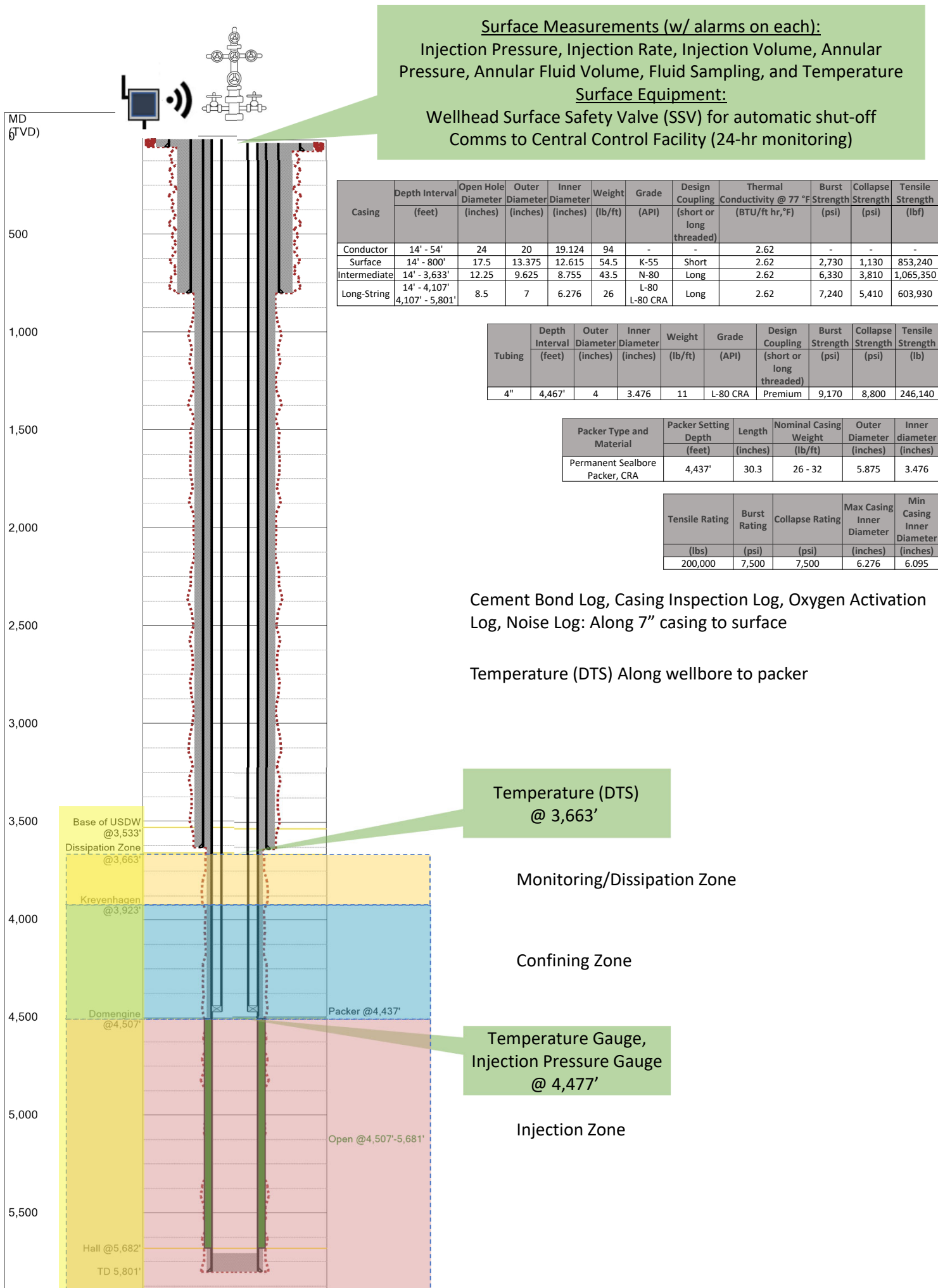


Figure 2. CTVW-I-DO1, Proposed Abandonment Schematic



**Figure 3. CTVW-I-DO2, Proposed CO<sub>2</sub> Injection Schematic**

Cut casing 5' below GL. Stamp and weld cap.  
Backfill and reclaim surface location.

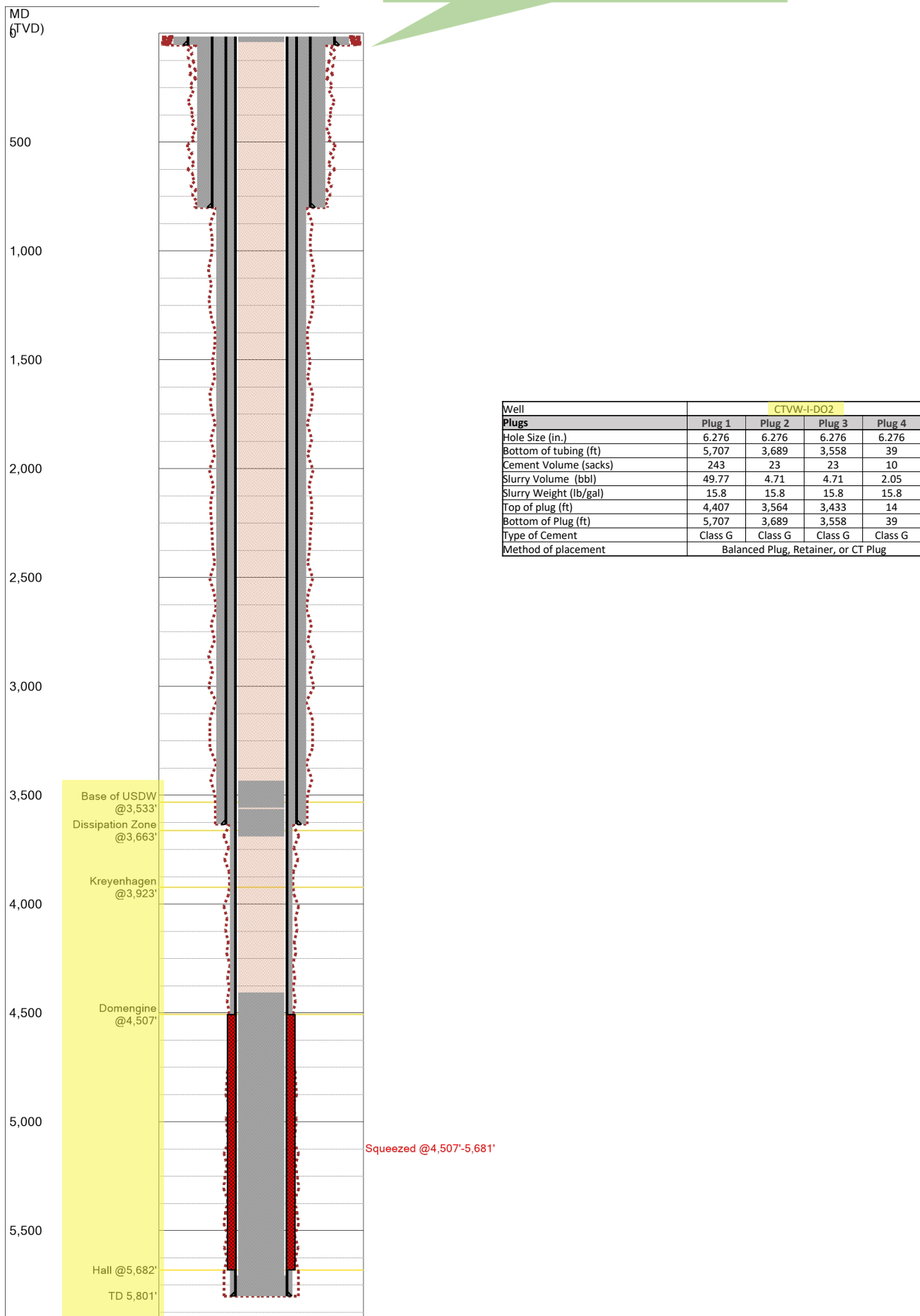
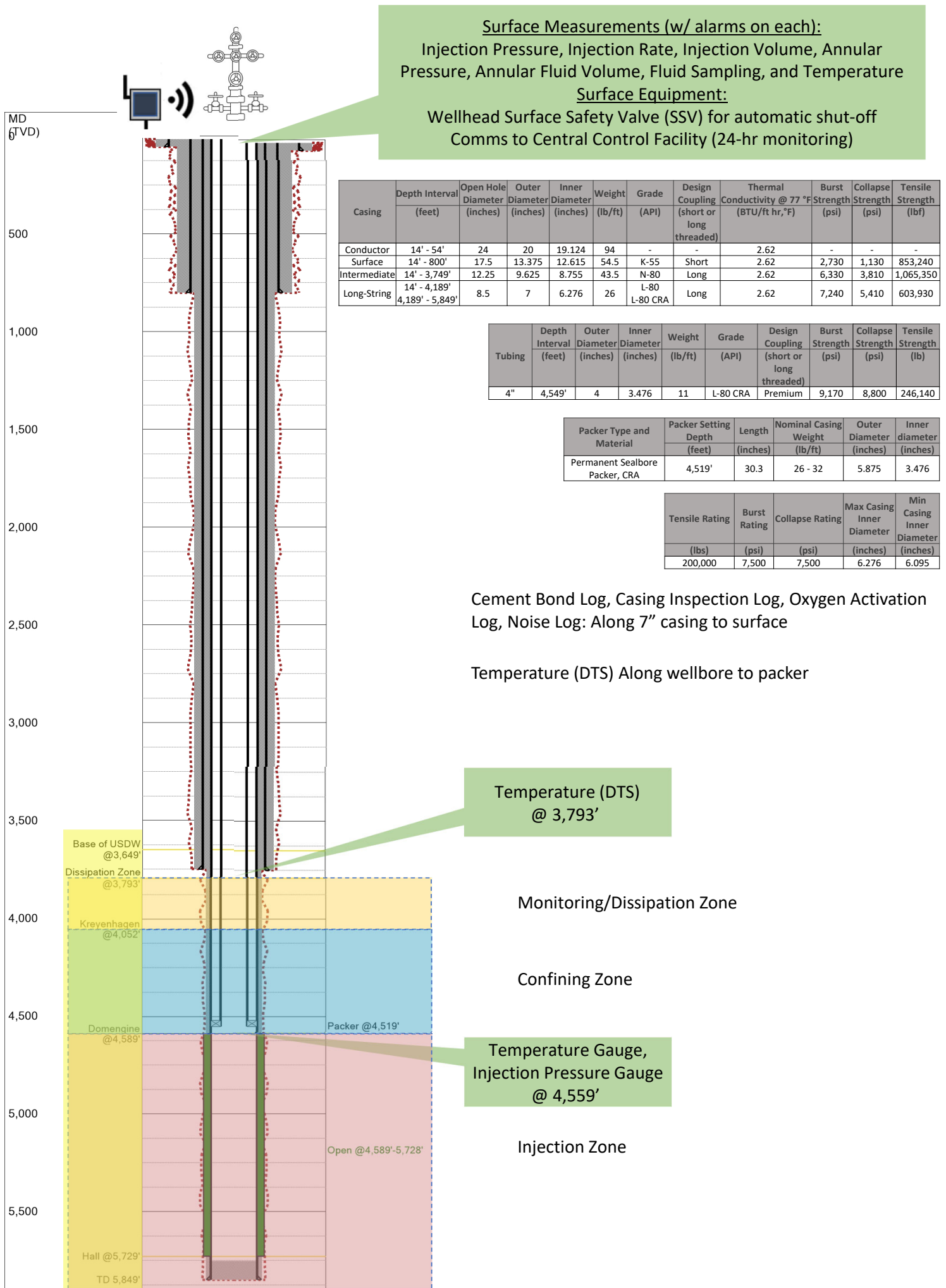


Figure 4. CTVW-I-DO2, Proposed Abandonment Schematic





**Figure 5. CTVW-I-DO3, Proposed CO<sub>2</sub> Injection Schematic**

Cut casing 5' below GL. Stamp and weld cap.  
Backfill and reclaim surface location.

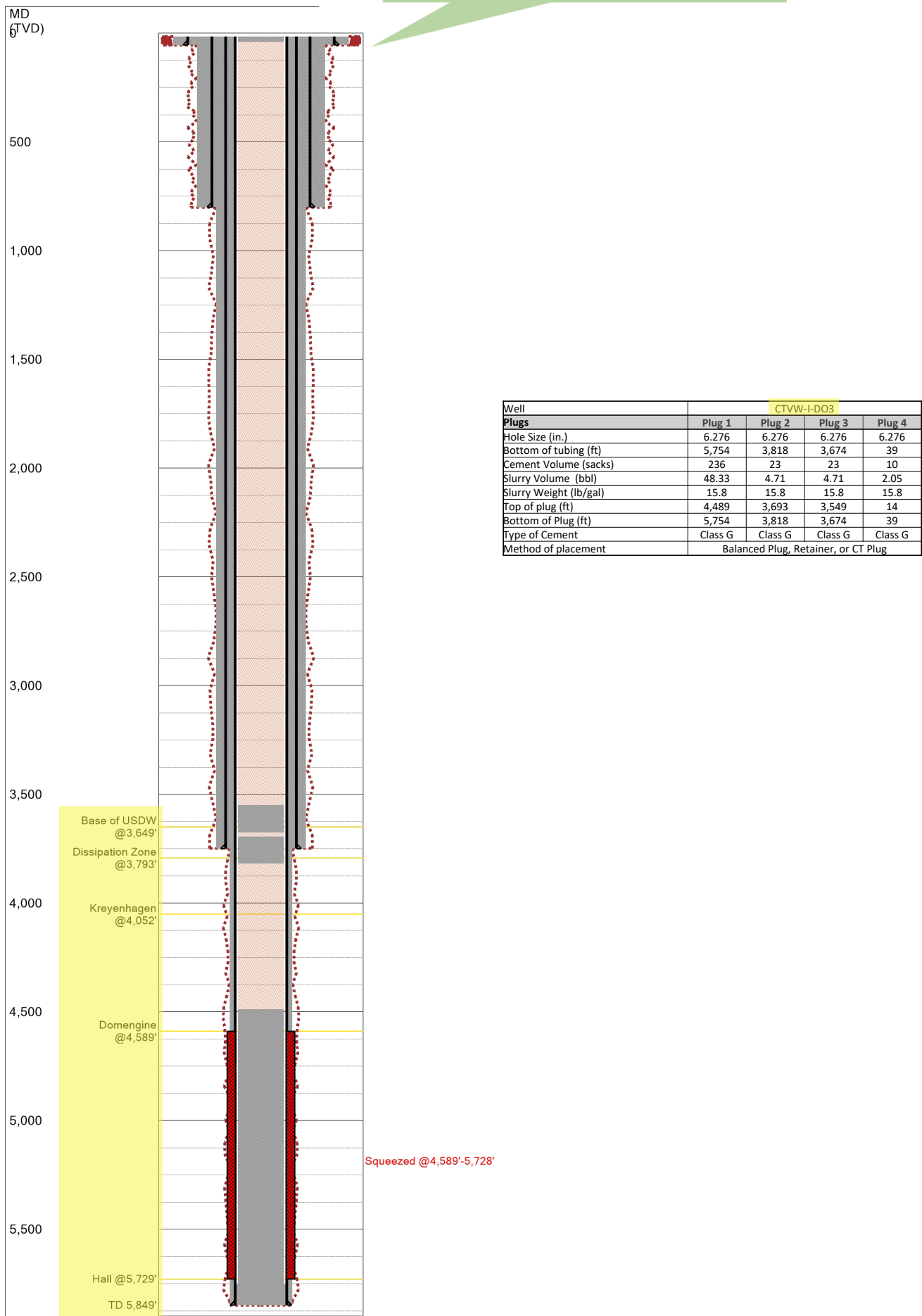
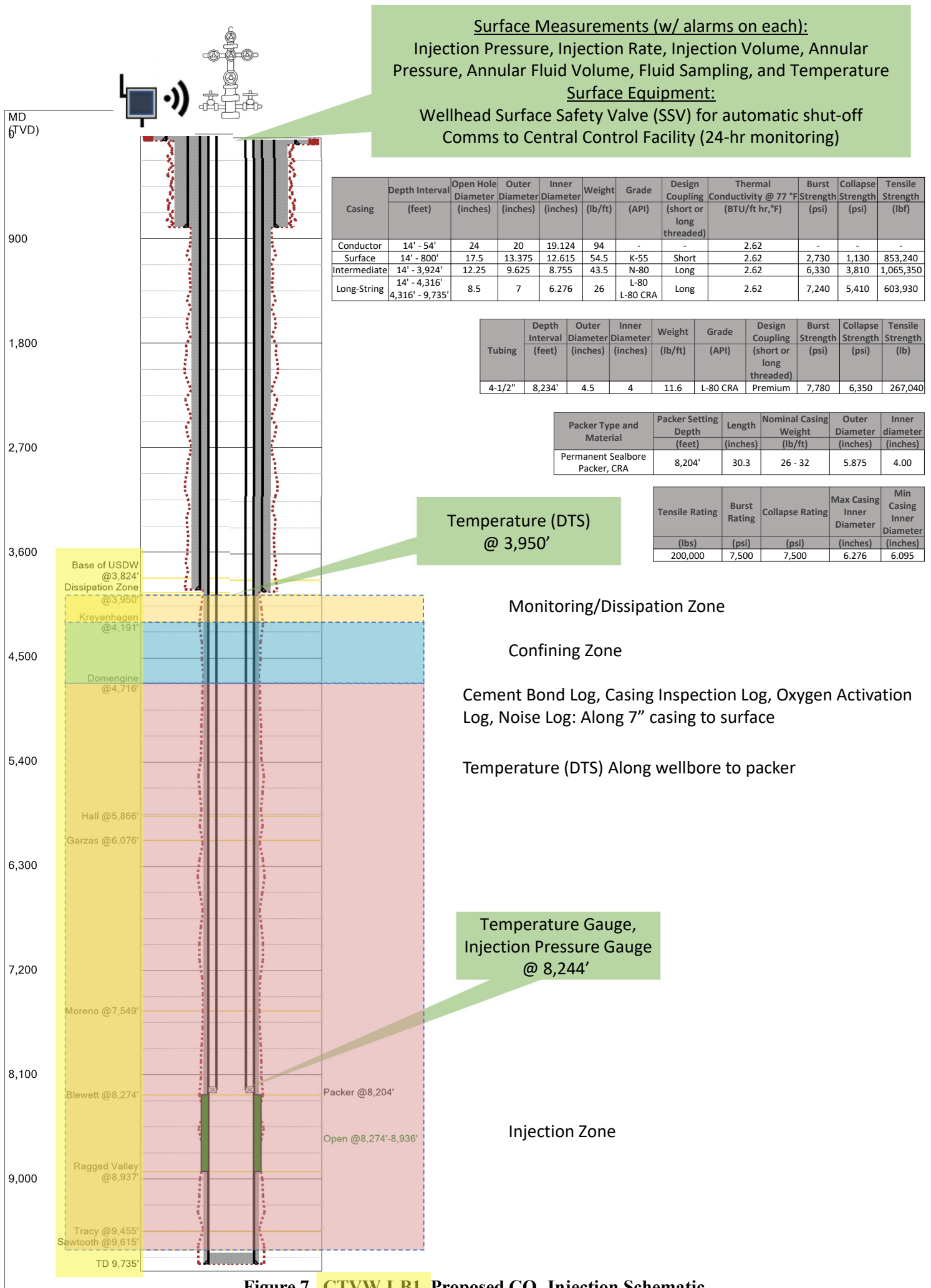


Figure 6. CTVW-I-DO3, Proposed Abandonment Schematic



Cut casing 5' below GL. Stamp and weld cap.  
Backfill and reclaim surface location.

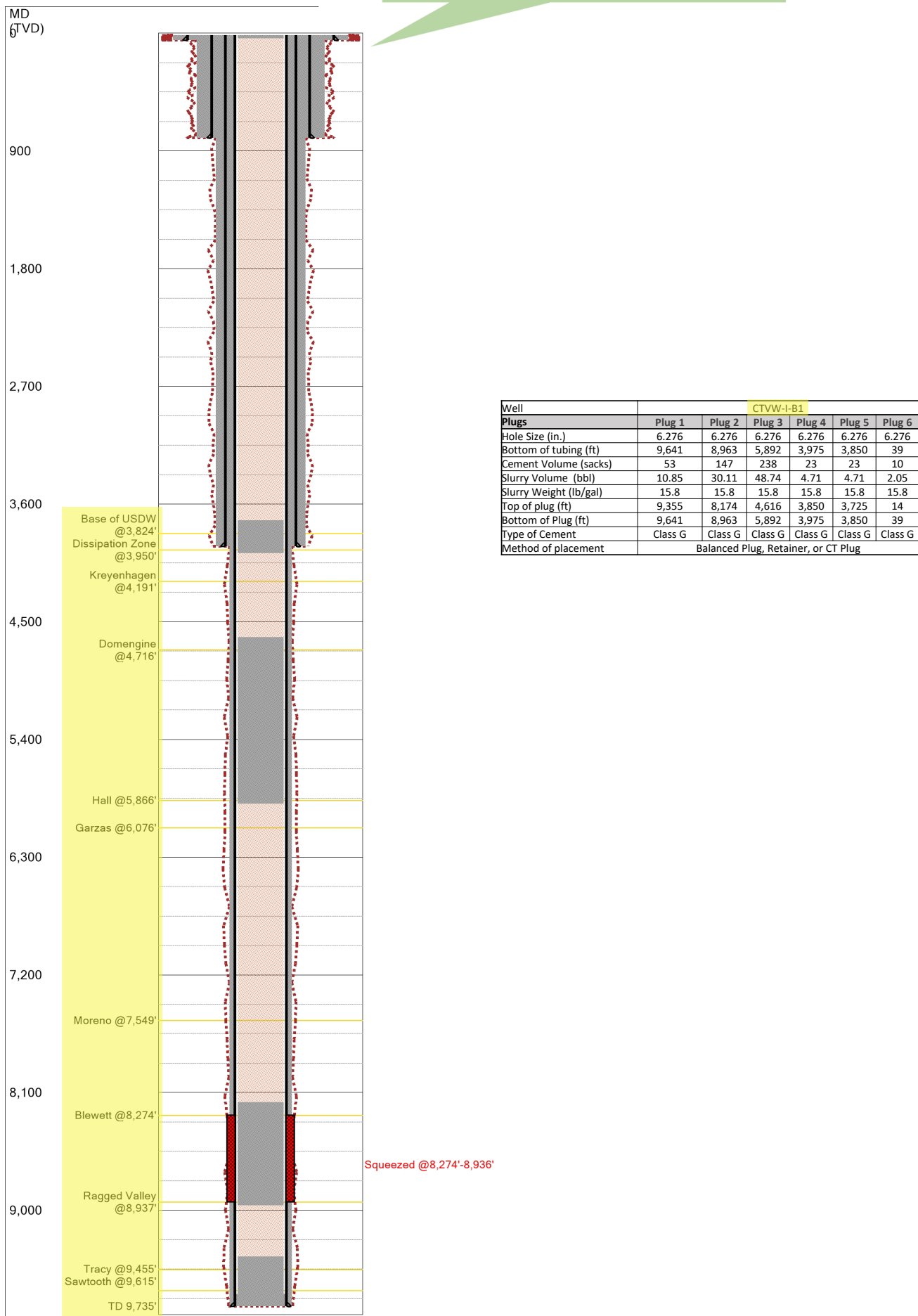
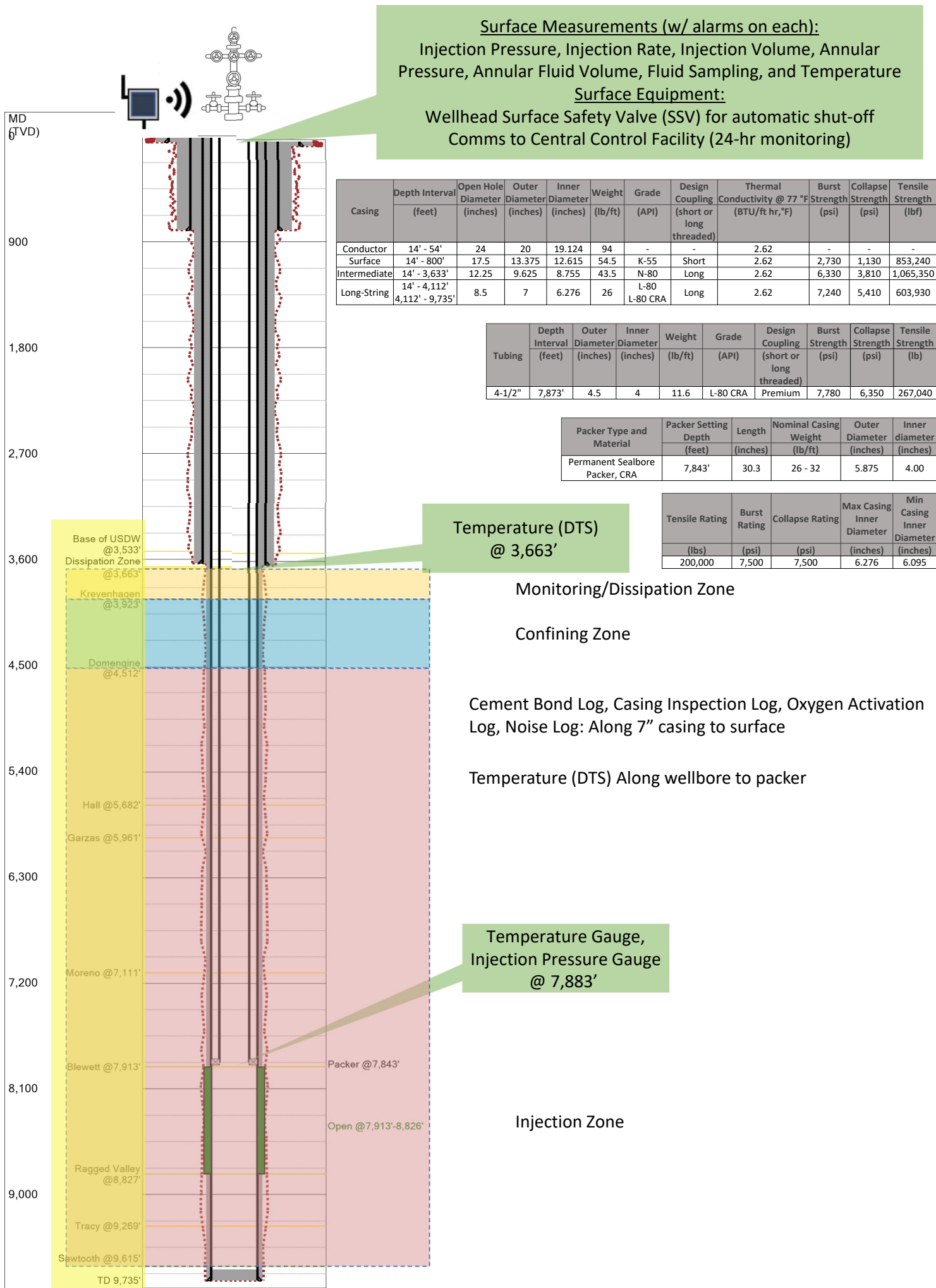


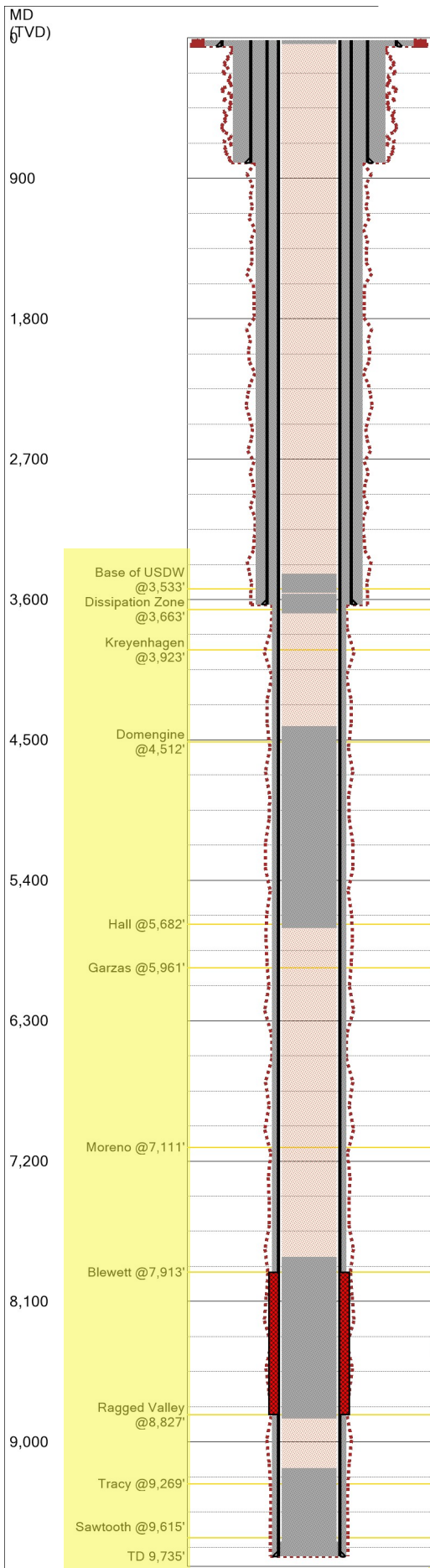
Figure 8. CTVW-I-B1, Proposed Abandonment Schematic



**Figure 9. CTVW-I-B2, Proposed CO<sub>2</sub> Injection Schematic**



Cut casing 5' below GL. Stamp and weld cap.  
Backfill and reclaim surface location.



Well	CTVW-I-B2					
Plugs	Plug 1	Plug 2	Plug 3	Plug 4	Plug 5	Plug 6
Hole Size (in.)	6.276	6.276	6.276	6.276	6.276	6.276
Bottom of tubing (ft)	9,641	8,852	5,707	3,689	3,558	39
Cement Volume (sacks)	88	194	242	23	23	10
Slurry Volume (bbl)	18.02	39.73	49.56	4.71	4.71	2.05
Slurry Weight (lb/gal)	15.8	15.8	15.8	15.8	15.8	15.8
Top of plug (ft)	9,169	7,813	4,412	3,564	3,433	14
Bottom of Plug (ft)	9,641	8,852	5,707	3,689	3,558	39
Type of Cement	Class G	Class G	Class G	Class G	Class G	Class G
Method of placement	Balanced Plug, Retainer, or CT Plug					

Figure 10. CTVW-I-B2, Proposed Abandonment Schematic

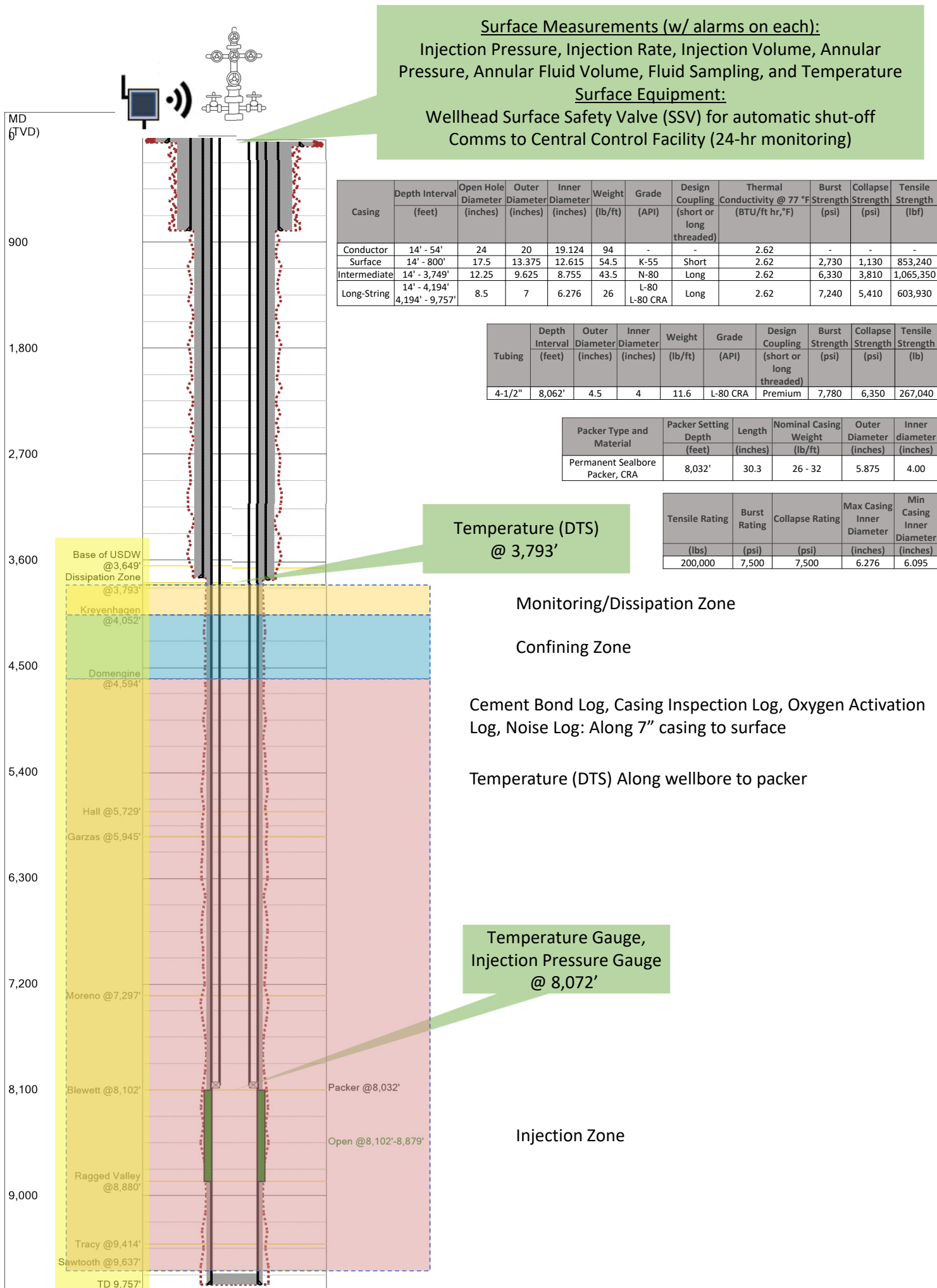
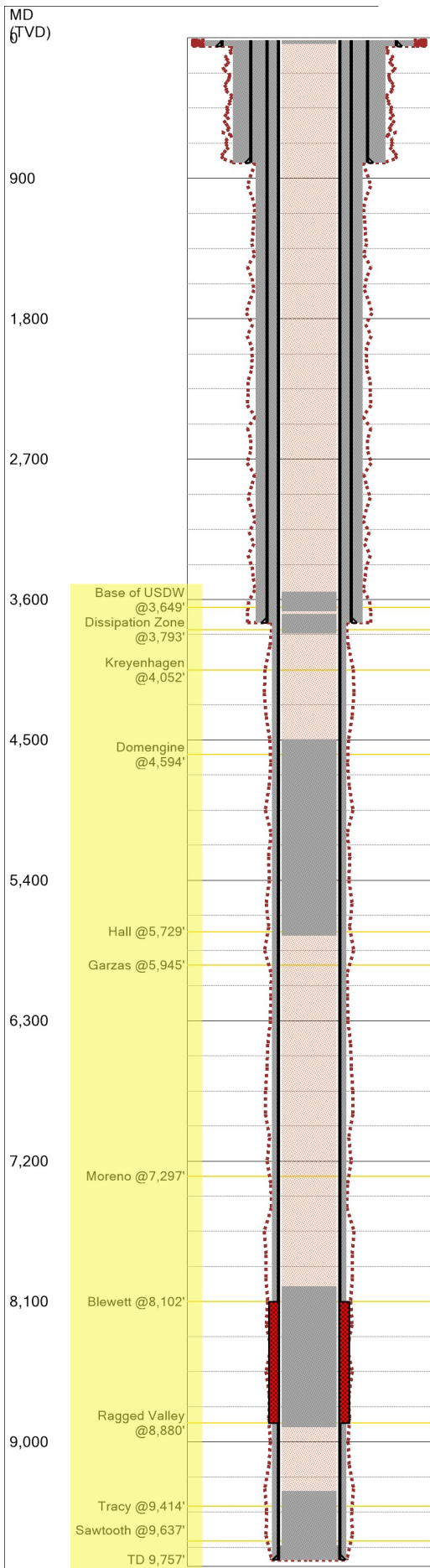


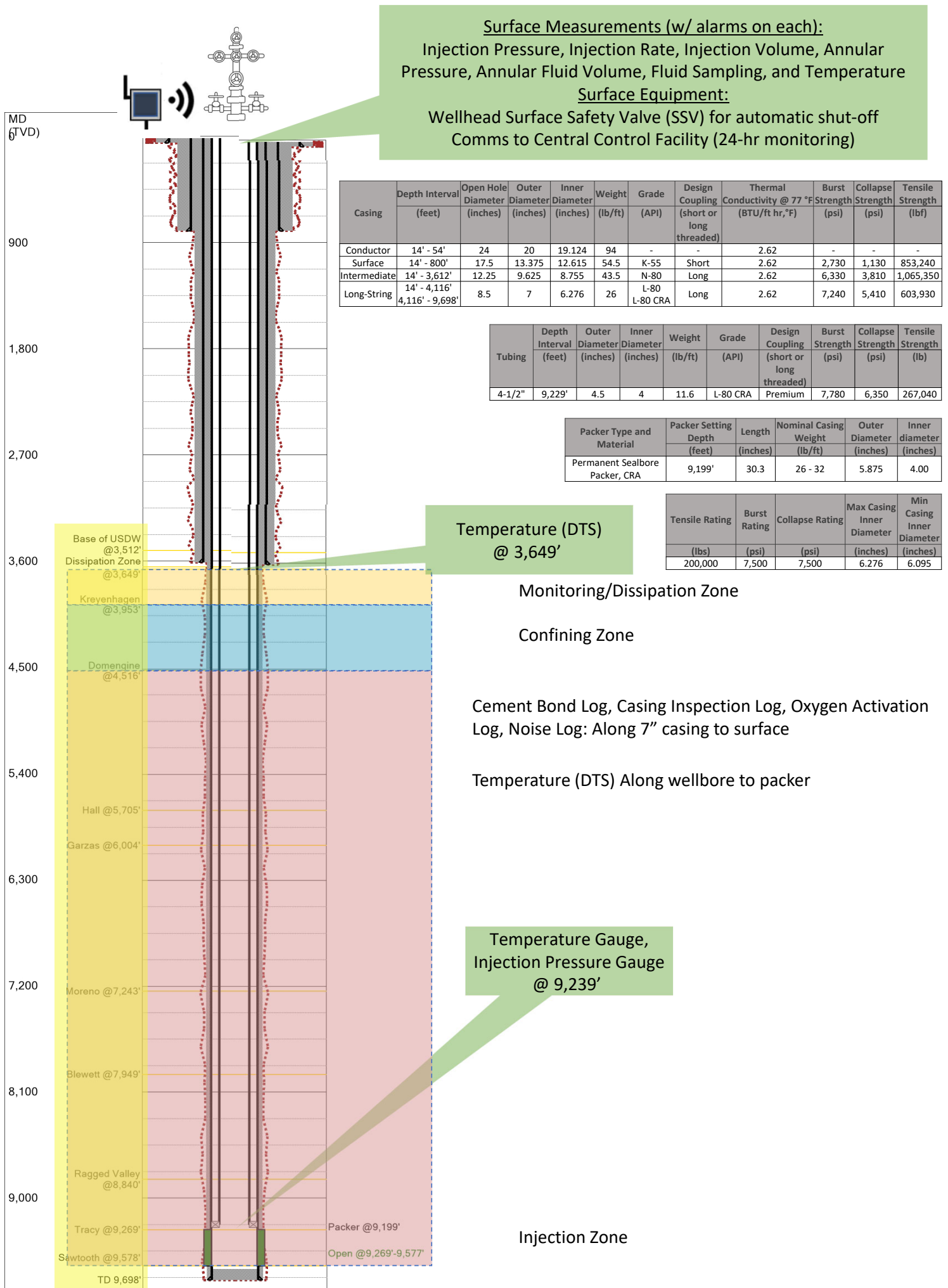
Figure 11. CTVW-I-B3, Proposed CO<sub>2</sub> Injection Schematic

Cut casing 5' below GL. Stamp and weld cap.  
Backfill and reclaim surface location.



Well	CTVW-I-B3					
Plugs	Plug 1	Plug 2	Plug 3	Plug 4	Plug 5	Plug 6
Hole Size (in.)	6.276	6.276	6.276	6.276	6.276	6.276
Bottom of tubing (ft)	9,663	8,905	5,754	3,818	3,674	39
Cement Volume (sacks)	65	169	235	23	23	10
Slurry Volume (bbl)	13.31	34.61	48.13	4.71	4.71	2.05
Slurry Weight (lb/gal)	15.8	15.8	15.8	15.8	15.8	15.8
Top of plug (ft)	9,315	8,002	4,494	3,693	3,549	14
Bottom of Plug (ft)	9,663	8,905	5,754	3,818	3,674	39
Type of Cement	Class G	Class G	Class G	Class G	Class G	Class G
Method of placement	Balanced Plug, Retainer, or CT Plug					

Figure 12. CTVW-I-B3, Proposed Abandonment Schematic



**Figure 13. CTVW-I-T1, Proposed CO<sub>2</sub> Injection Schematic**

Cut casing 5' below GL. Stamp and weld cap.  
Backfill and reclaim surface location.

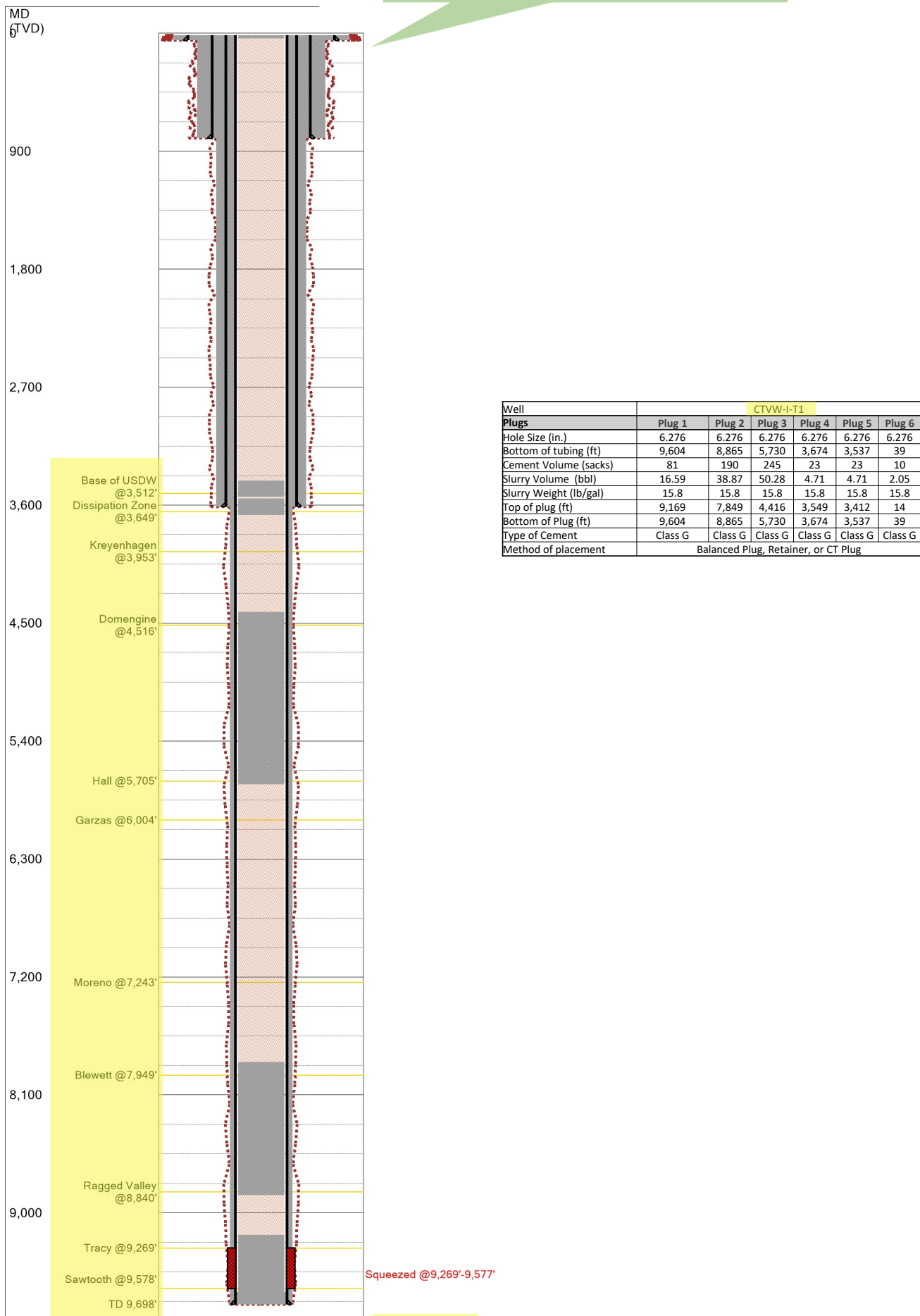
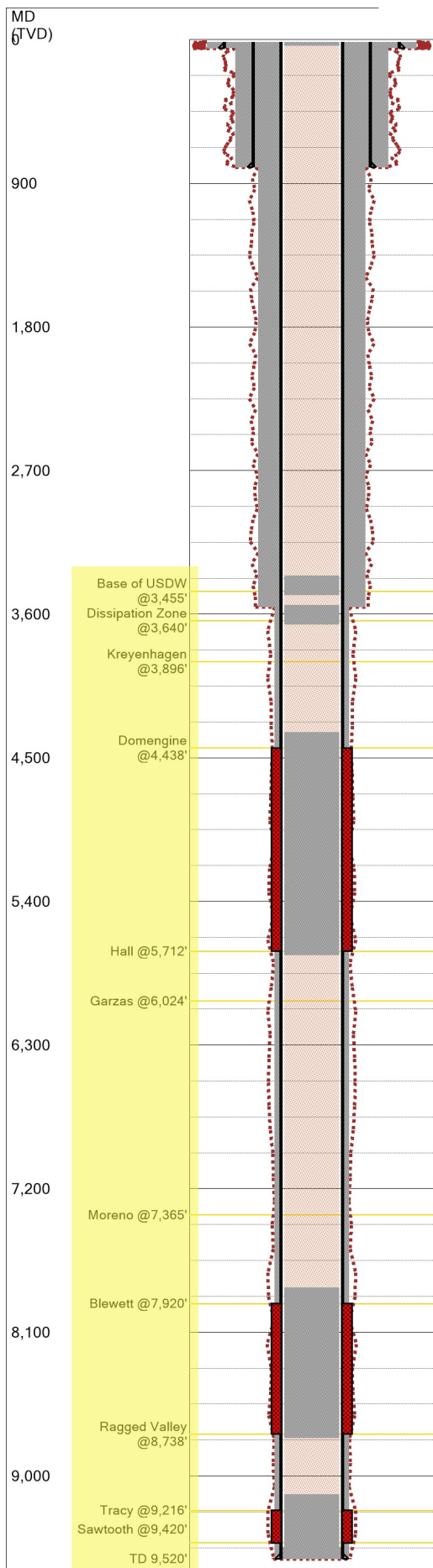


Figure 14. CTV-I-T1, Proposed Abandonment Schematic



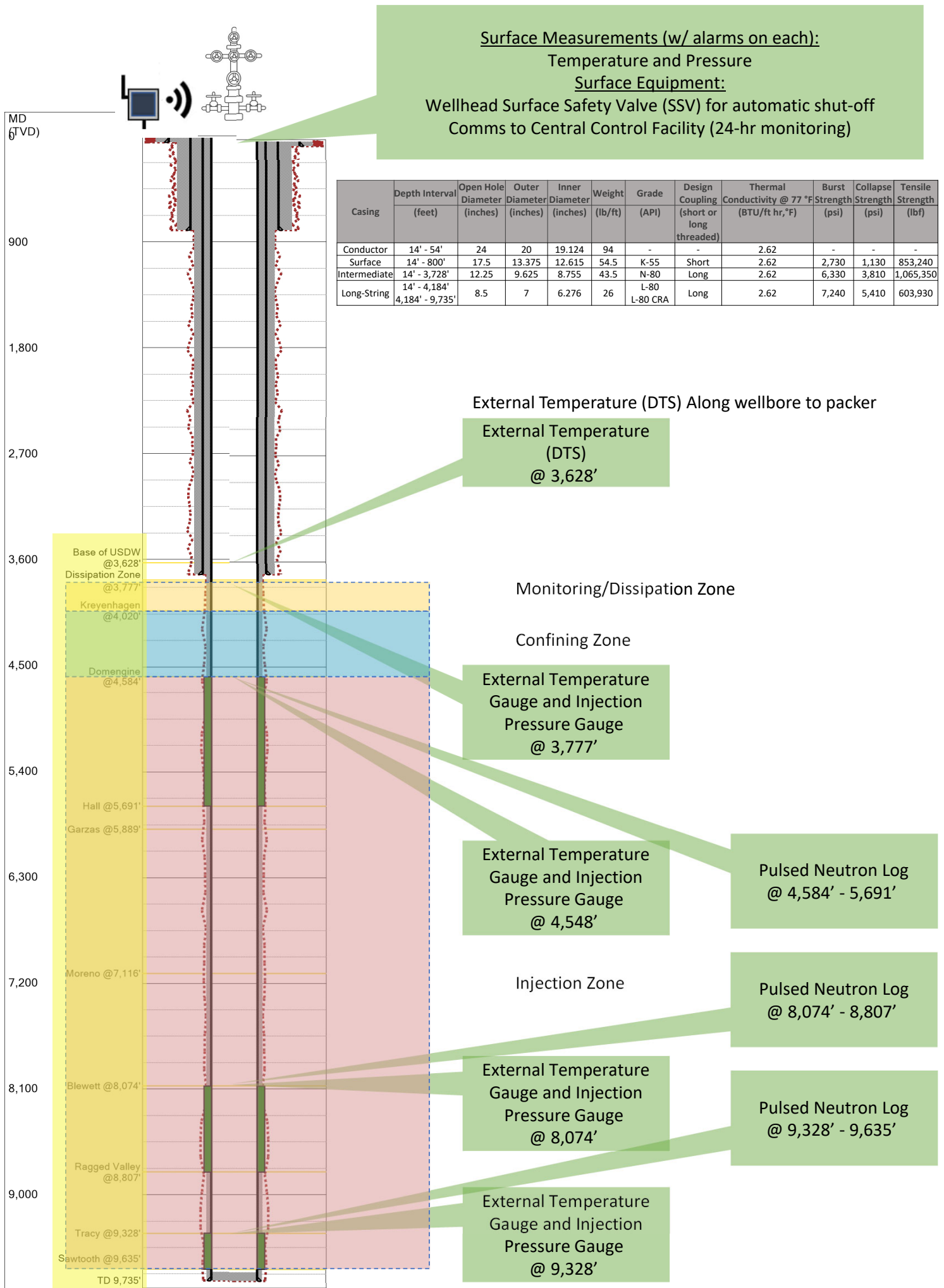


Cut casing 5' below GL. Stamp and weld cap.  
Backfill and reclaim surface location.



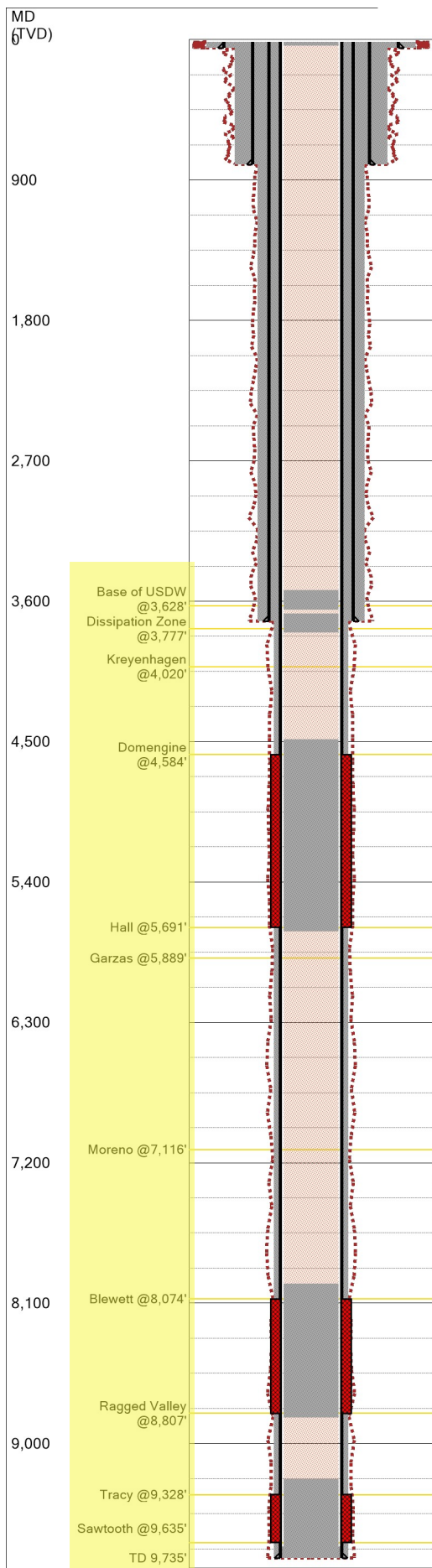
Well	CTVW-M-IZ1					
Plugs	Plug 1	Plug 2	Plug 3	Plug 4	Plug 5	Plug 6
Hole Size (in.)	6.276	6.276	6.276	6.276	6.276	6.276
Bottom of tubing (ft)	9,446	8,764	5,738	3,666	3,481	39
Cement Volume (sacks)	62	176	261	23	23	10
Slurry Volume (bbl)	12.7	36.05	53.46	4.71	4.71	2.05
Slurry Weight (lb/gal)	15.8	15.8	15.8	15.8	15.8	15.8
Top of plug (ft)	9,116	7,820	4,339	3,541	3,356	14
Bottom of Plug (ft)	9,446	8,764	5,738	3,666	3,481	39
Type of Cement	Class G	Class G	Class G	Class G	Class G	Class G
Method of placement	Balanced Plug, Retainer, or CT Plug					

Figure 16. CTVW-M-IZ1, Proposed Abandonment Schematic



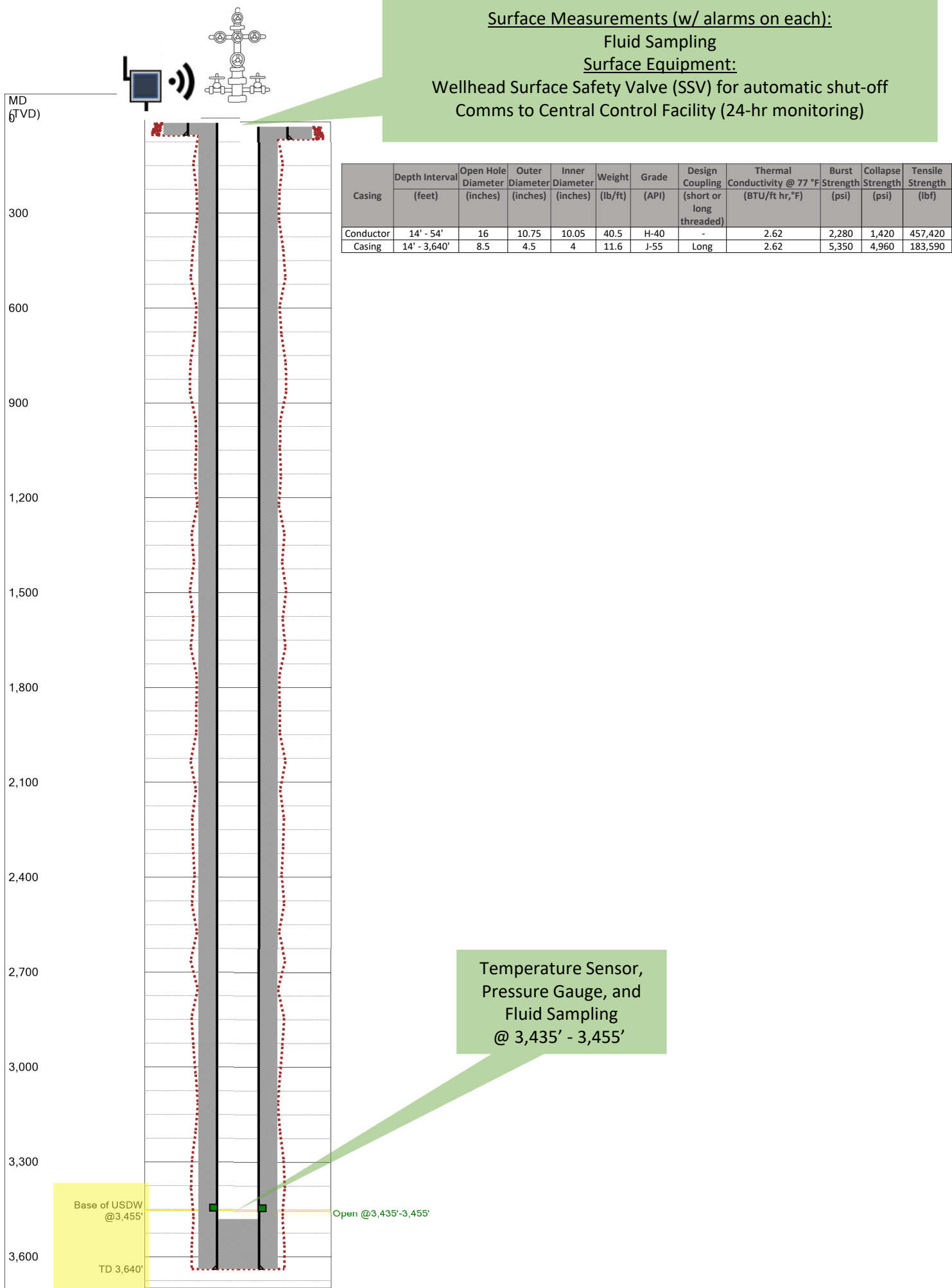
**Figure 17. CTVW-M-IZ2, Proposed Monitoring Schematic**

Cut casing 5' below GL. Stamp and weld cap.  
Backfill and reclaim surface location.



Well	CTVW-M-IZ2					
Plugs	Plug 1	Plug 2	Plug 3	Plug 4	Plug 5	Plug 6
Hole Size (in.)	6.276	6.276	6.276	6.276	6.276	6.276
Bottom of tubing (ft)	9,660	8,832	5,717	3,802	3,653	39
Cement Volume (sacks)	81	160	230	23	23	10
Slurry Volume (bbl)	16.59	32.77	47.11	4.71	4.71	2.05
Slurry Weight (lb/gal)	15.8	15.8	15.8	15.8	15.8	15.8
Top of plug (ft)	9,228	7,975	4,484	3,677	3,528	14
Bottom of Plug (ft)	9,660	8,832	5,717	3,802	3,653	39
Type of Cement	Class G	Class G	Class G	Class G	Class G	Class G
Method of placement	Balanced Plugs					

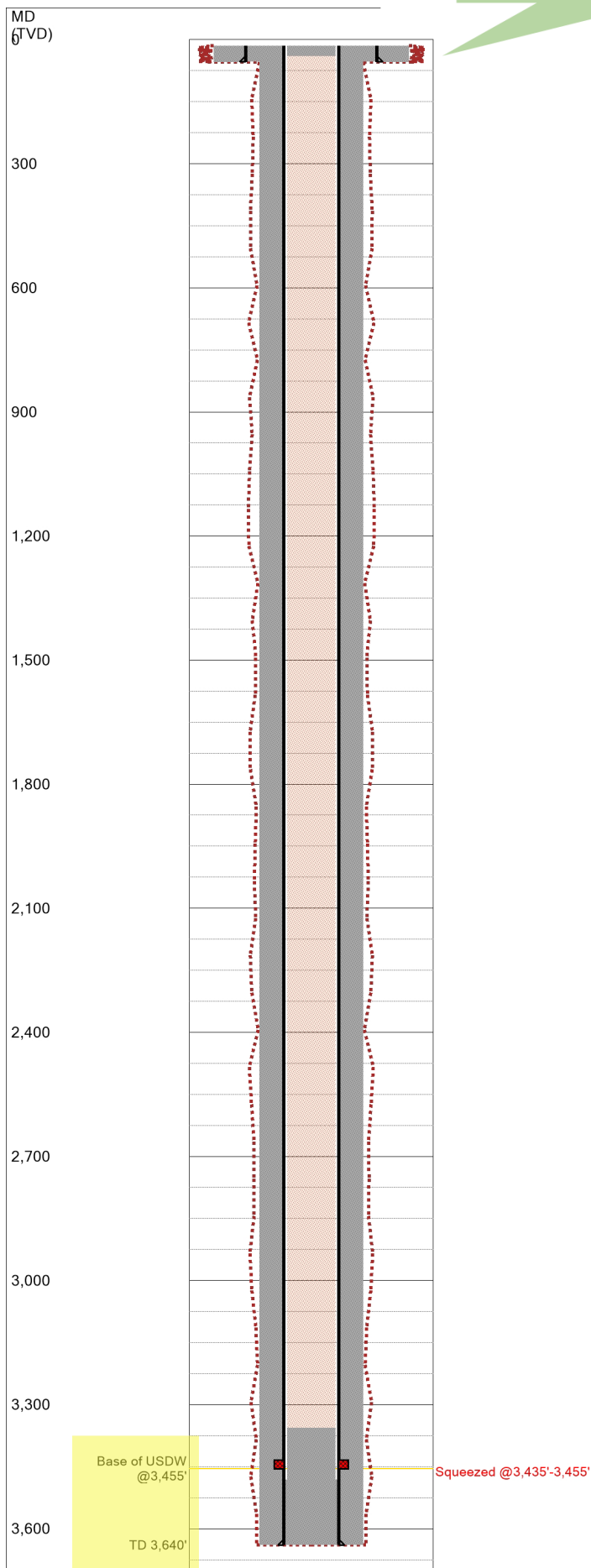
Figure 18. CTVW-M-IZ2, Proposed Abandonment Schematic



**Figure 19. CTVW-M-USDW1, Proposed Monitoring Schematic**



Cut casing 5' below GL. Stamp and weld cap.  
Backfill and reclaim surface location.



Well	CTVW-M-USDW1	
Plugs	Plug 1	Plug 2
Diameter of boring in which plug will be placed (in.)	4	4
Depth to bottom of tubing or drill pipe (ft)	3,481	39
Sacks of Cement to be used (each plug)	9	8
Slurry Volume to be pumped (bbl)	1.84	1.64
Slurry Weight (lb/gal)	15.8	15.8
Calculated top of plug (ft)	3,356	14
Bottom of Plug (ft)	3,481	39
Type of Cement or other material	Portland	
Method of placement (e.g., balance method, retainer method, or two-plug method)	Balanced Plug, Retainer, or CT Plug	

Figure 20. CTVW-M-USDW1, Proposed Abandonment Schematic

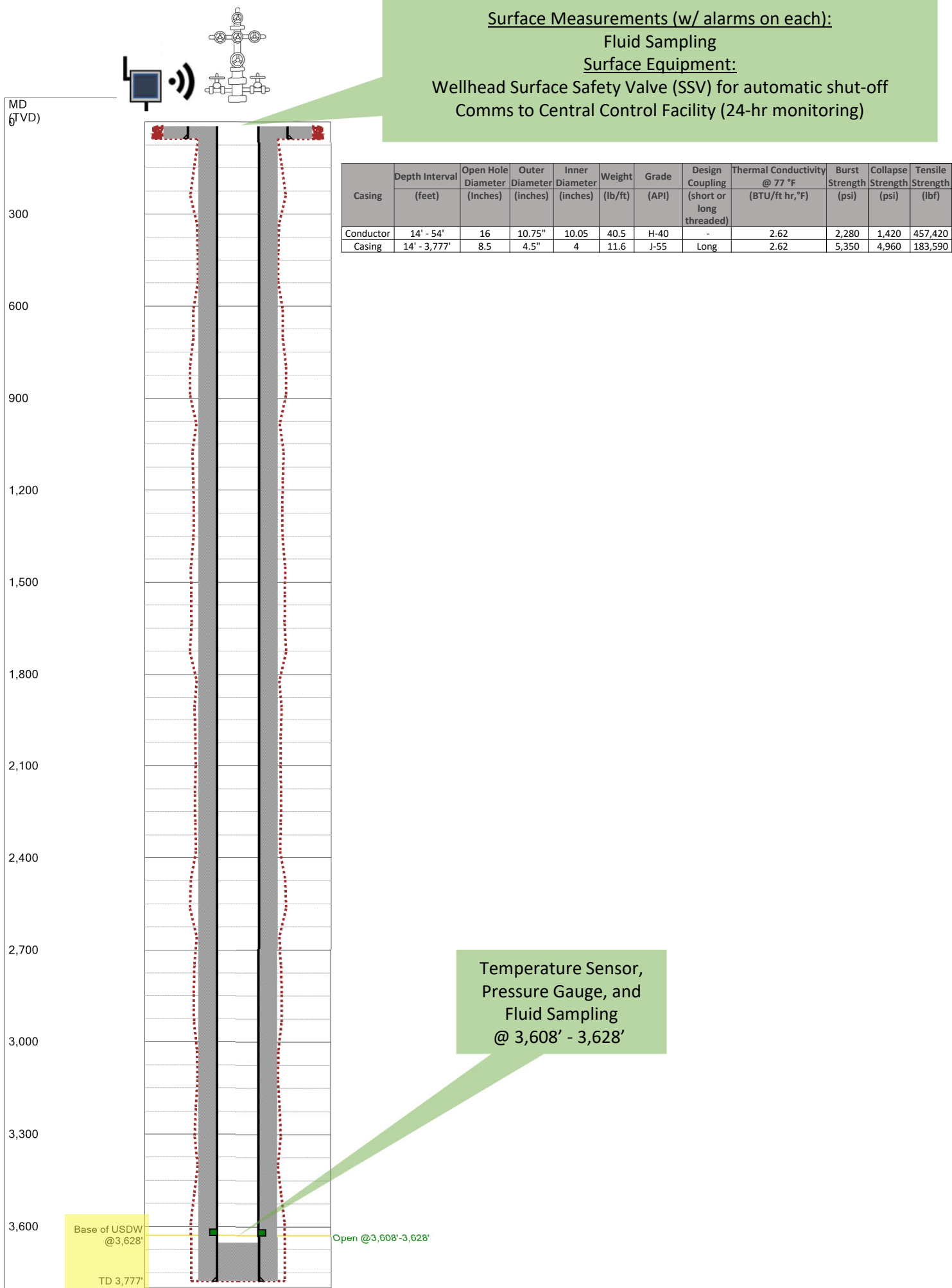


Figure 21. CTVW-M-USDW2, Proposed Monitoring Schematic

Cut casing 5' below GL. Stamp and weld cap.  
Backfill and reclaim surface location.

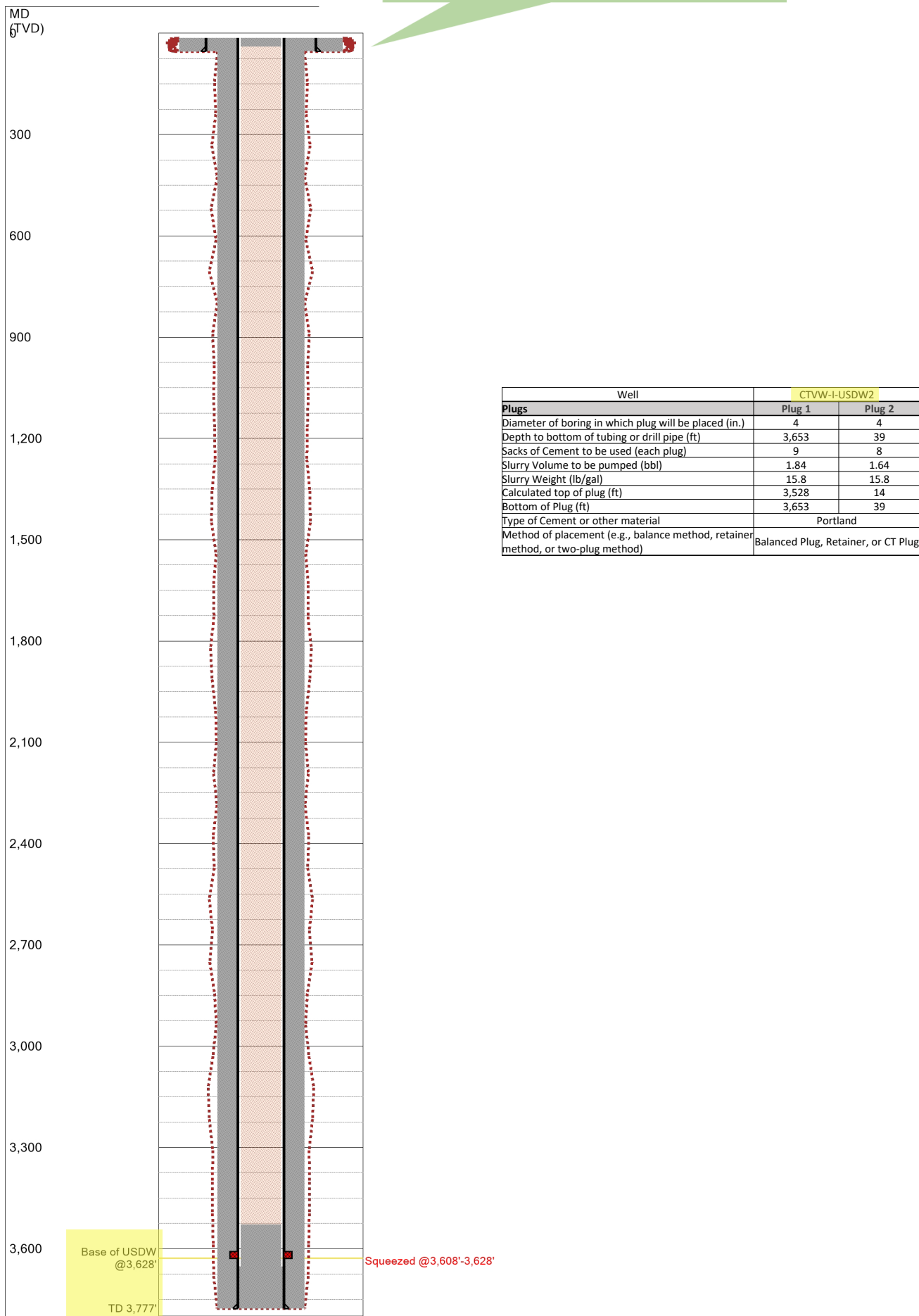


Figure 22. CTVW-M-USDW2, Proposed Abandonment Schematic